

Skin Analysis and Consulting in the Cosmetic Studio

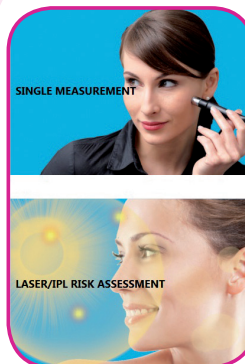
moisture, oil, melanin/erythema

Skin Diagnostic SD 202

- basically equipped with moisture, oil and melanin/erythema measurement
- further probes (pH, TEWL-Index) can be connected to the device on special request
- results shown on display
- skin type and laser risk analysis for computer with special software Dermacheck 3000 can optionally be obtained

The SD 202 is light, portable, battery operated, flexible and easy to handle. It can be used easily on the counter, in a beauty or hairdressers salon, at the dermatologist or in the pharmacy to attract customers and to increase the sales of cosmetic products.

Please ask for our special transportation accessories.



Technical Data:
Power Supply: battery operated (9 V); Dimensions: 15 x 14 x 4.5 cm;
Weight: 0.5 kg; Measurement Principle: moisture: capacitance (scale 0-99), sebum: photometrically (scale 0-99), melanin/erythema: absorption/reflection (scale 0-99), pH: glass electrode (pH with one decimal), TEWL-Index: open chamber water flux measurement (scale 0-20)

Technical changes may be made without prior notice.



MONADERM

5, rue des Violettes
98000 MONACO
☎ : +377 93 25 26 08
contact@monaderm.com